



The Suit & Tuxedo

RENTAL COLLECTION

JFW

JIM'S FORMAL WEAR

STORE COPY

WE FIT EVERYONE!

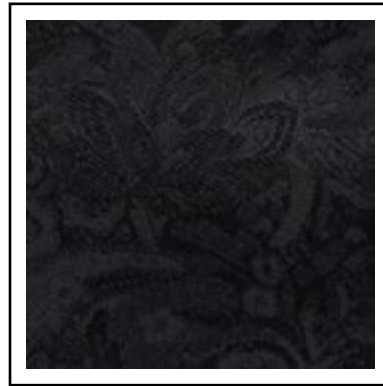


**Ultra Slim and Slim Fit Styles
to fit all shapes and sizes.**

COAT FABRIC SWATCHES FOR RENTAL

Choose your look from our collection of colored tuxedos & suits

Reference page number for tuxedo & suit details



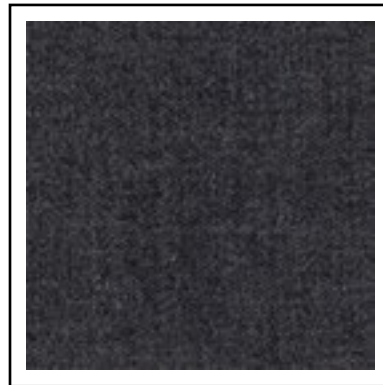
Color: Black Paisley
Style: 182
Page: 39



Color: Granite Paisley
Style: 192
Page: 38



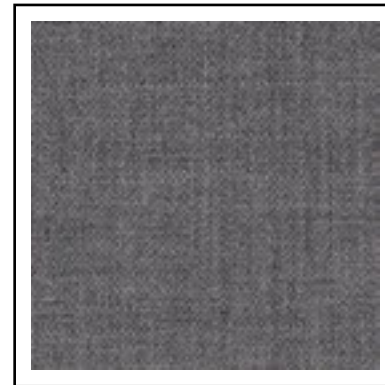
Color: Grey Portofino
Style: 301
Page: 42



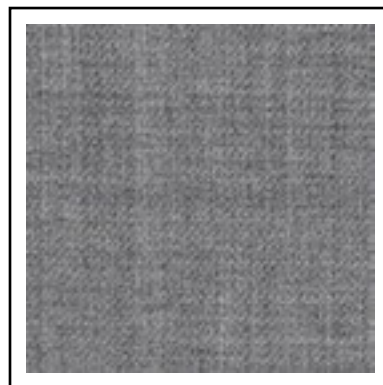
Color: Steel Grey
Styles: 391, 392
Pages: 17, 24, 25, 61



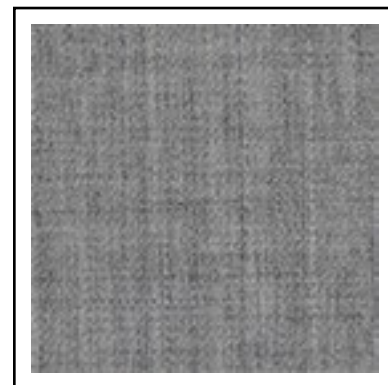
Color: Grey Plaid
Style: 231
Page: 33



Color: Medium Grey
Style: 350
Pages: 17, 20, 60



Color: Heather Grey
Style: 262
Pages: 17, 32, 59



Color: Heather Grey
Style: 362
Page: 41



Color: Sand
Style: 202
Page: 31

COAT FABRIC SWATCHES FOR RENTAL

Choose your look from our collection of colored tuxedos & suits

Reference page number for tuxedo & suit details



Color: Navy
Styles: 371, 372
Pages: 16, 22, 23, 58



Color: Blue
Style: 302
Pages: 16, 21, 57



Color: Cobalt Blue
Style: 211
Page: 34



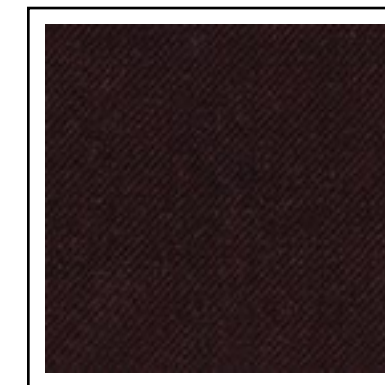
Color: Cobalt Paisley
Style: 132
Page: 40



Color: Indigo Blue
Style: 221
Page: 35



Color: Tan
Style: 252
Page: 43



Color: Burgundy
Style: 201
Page: 36



Color: Apple Red Paisley
Style: 122
Page: 37

Ring Bearer Savings!

ALL STYLES are specially priced for your little guy.

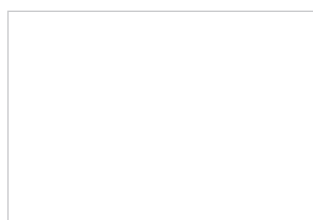
To qualify for the Ring Bearer Special Price:

- ▶ The Ring Bearer must be accompanied by the groom's tuxedo or suit rental and five fully paid rentals in the wedding party.
- ▶ Ring Bearer's tuxedo or suit may not exceed size 16.



All Tuxedos and Suits are specially priced for the Ring Bearer at:

Any pant, basic shirt, tie and premium vest included; shoes and pocket squares are additional.



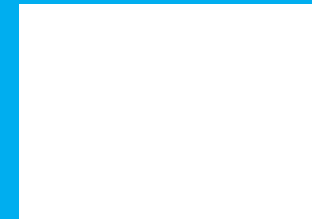
PRICING INFORMATION

Find Tuxedos, Suits and Formal Accessories to match any budget



DIAMOND COLLECTION | Pages 18-40

Diamond Collection ensembles include:
Any pant, any basic shirt with nickel-plated jewelry, any tie and any vest or cummerbund.



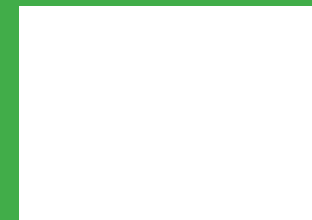
PLATINUM COLLECTION | Pages 41-50

Platinum Collection ensembles include:
Any pant, any basic shirt with nickel-plated jewelry, any tie and any vest or cummerbund.



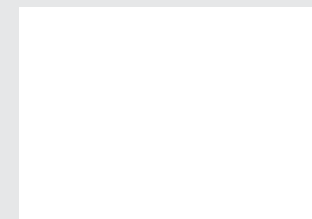
GOLD COLLECTION | Pages 51-52

Gold Collection ensembles include:
Any pant, any basic shirt with nickel-plated jewelry, any tie and any vest or cummerbund.



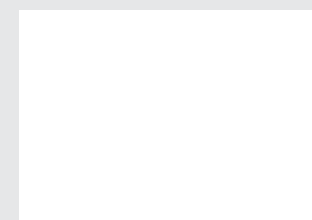
BUDGET COLLECTION | Pages 53-54

Budget Collection ensembles include:
Any pant, any basic shirt with nickel-plated jewelry, any tie and any vest or cummerbund.



POCKET SQUARES

An essential component of every ensemble, a colorful pocket square is available to match nearly every fullback vest or tie offered. Don't forget to add one to your look!



ACCIDENTAL DAMAGE WAIVER (ADW) - added to each rental

The ADW relieves you from additional charges resulting from accidental damages when they can be repaired through normal dry cleaning or minor tailoring. The ADW does not cover malicious damages, lost or stolen items, or any late return charges.

All Tuxedo and Suit Rentals MUST be returned the next business day to avoid additional rental charges!

BLACK STYLES



Ultra Slim Fit

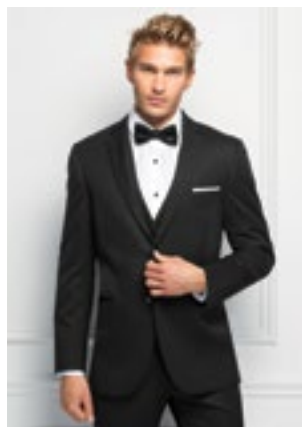
Trim and tapered styling, fits close to the body.



921-Legacy Performance Stretch Tuxedo
by Michael Kors
page 18



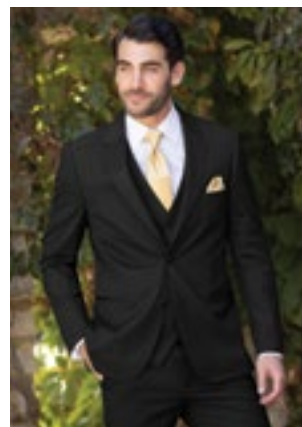
421-Performance Stretch Wedding Suit
by Michael Kors
page 19



471-Sterling Wedding Suit
by Michael Kors
page 26



991-Berkeley Tuxedo
by Michael Kors
page 28



981-Force Performance Stretch Tuxedo
by Michael Kors
page 30



Slim Fit

Contemporary styling with a slimming appearance.



472-Sterling Wedding Suit
by Michael Kors
page 27



990-Berkeley Tuxedo
by Michael Kors
page 29



192-Aries Paisley Tuxedo
by Mark of Distinction
page 38



182-Aries Paisley Tuxedo
by Mark of Distinction
page 39

BLACK STYLES



Modern Fit

Fashion-forward styling with a flattering silhouette.



822-Cyprus Tuxedo
by Stephen Geoffrey
page 44



852-Emerson Tuxedo
by Stephen Geoffrey
page 45



802-Troy Tuxedo
by Stephen Geoffrey
page 46

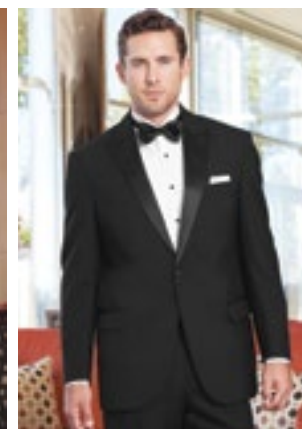


Traditional Fit

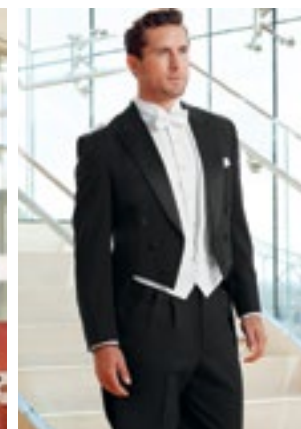
A classic, fuller cut tuxedo.



820-Classic Notch Tuxedo
page 51



880-Classic Peak Tuxedo
page 53



588-Classic Peak Fulldress
page 54

MICHAEL MICHAEL KORS

Legacy Ultra Slim Fit
Performance Stretch Tuxedo
Style 921

Photo Courtesy of:
Joleen Willis Photography
joleenwillis.com



SG
stephengeoffrey

Emerson
Style 852



ALLURE MEN

Heather Grey Clayton
Ultra Slim Fit Suit
Style 262

GREY STYLES



Ultra Slim Fit

Trim and tapered styling, fits close to the body.



**350-Performance Stretch
Wedding Suit**
by Michael Kors
page 20



391-Sterling Wedding Suit
by Michael Kors
page 24



262-Clayton Suit
by Allure Men
page 32



231-Plaid Hamilton Suit
by Ike Behar
page 33

GREY STYLES



Slim Fit

Contemporary styling with a slimming appearance.



392-Sterling Wedding Suit
by Michael Kors
page 25



362-Aspen Tuxedo
by Stephen Geoffrey
page 41

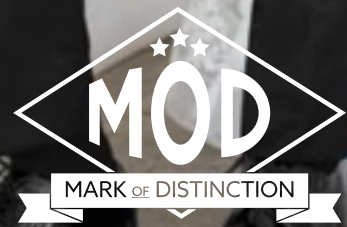


301-Portofino Tuxedo
by Tony Bowls
page 42



MICHAEL
MICHAEL KORS

Steel Grey Sterling
Slim Fit Wedding Suit
Style 392



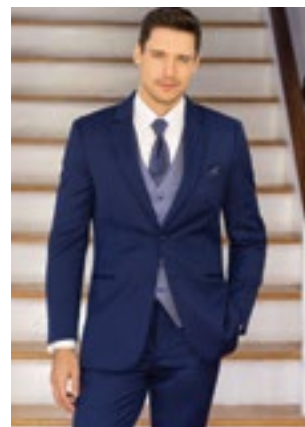
**Cobalt Aries Paisley
Slim Fit Tuxedo**
Style 132

BLUE STYLES



Ultra Slim Fit

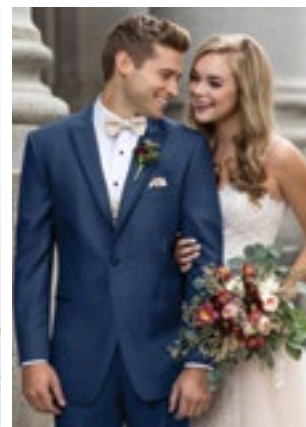
Trim and tapered styling, fits close to the body.



**302-Performance Stretch
Wedding Suit**
by Michael Kors
page 21



371-Sterling Wedding Suit
by Michael Kors
page 22



221-Lane Tuxedo
by Ike Behar
page 35



211-Tribeca Tuxedo
by Ike Behar
page 34



Slim Fit

Contemporary styling with a slimming appearance.



372-Sterling Wedding Suit
by Michael Kors
page 23



132-Aries Paisley Tuxedo
by Mark of Distinction
page 40

RED & TAN STYLES

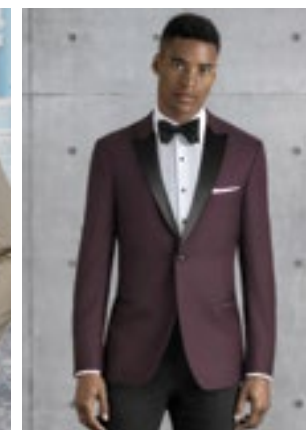


Ultra Slim Fit

Trim and tapered styling, fits close to the body.



202-Brunswick Suit
by Allure Men
page 31



201-Empire Tuxedo
by Kenneth Cole
page 36

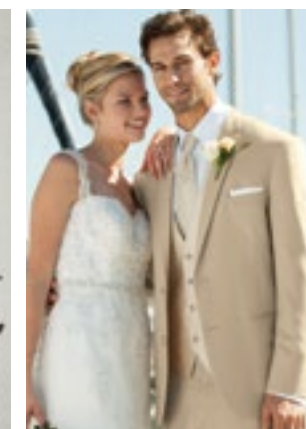


Slim Fit

Contemporary styling with a slimming appearance.



122-Aries Paisley Tuxedo
by Mark of Distinction
page 37



252-Havana Suit
by Lord West
page 43



KENNETH COLE

Burgundy Empire Ultra Slim Fit Tuxedo
Style 201



WHITE & IVORY STYLES

U Ultra Slim Fit

Trim and tapered styling, fits close to the body.



751-Waverly Tuxedo
by Ike Behar
page 47

S Slim Fit

Contemporary styling with a slimming appearance.



601-Classic Shawl
by Stephen Geoffrey
page 49



701-Classic Shawl
-
page 52

M Modern Fit

Fashion-forward styling with a flattering silhouette.



712-Troy Tuxedo
by Stephen Geoffrey
page 48



602-Troy Tuxedo
by Stephen Geoffrey
page 50

FASHION STYLES

U Ultra Slim Fit

Trim and tapered styling, fits close to the body.



231-Plaid Hamilton Suit
by Ike Behar
page 33



211-Tribeca Tuxedo
by Ike Behar
page 34



201-Empire Tuxedo
by Kenneth Cole
page 36



751-Waverly Tuxedo
by Ike Behar
page 47

S Slim Fit

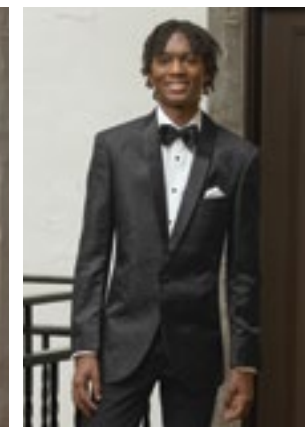
Contemporary styling with a slimming appearance.



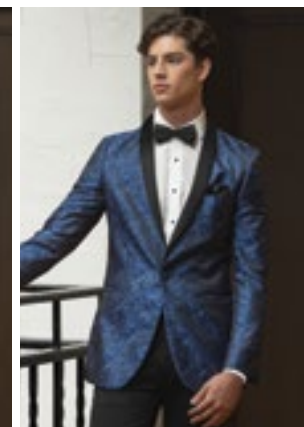
122-Apple Red Aries Paisley Tuxedo
by Mark of Distinction
page 37



192-Granite Aries Paisley Tuxedo
by Mark of Distinction
page 38



182-Black Aries Paisley Tuxedo
by Mark of Distinction
page 39



132-Cobalt Aries Paisley Tuxedo
by Mark of Distinction
page 40



301-Portofino Tuxedo
by Tony Bowls
page 42



Aries Paisley Slim Fit Tuxedos



Waverly
Ultra Slim Fit Tuxedo
Style 751



RENT
Blake rented his suit and had it shipped to his office

BUY
Josh bought his suit as a momento of his wedding day

BUY
David wears suits regularly, loved the color, and bought it

RENT
Chase lives out of town, had his suit shipped, and brought it along

RENT
Michael picked up his suit at a local store

RENT OR BUY

Photo Courtesy of:
Maddy Godt Photography
maddygodtphotography.com

OUR ADVANTAGES OVER THE 'BIG BOX' STORES

- Direct Delivery Convenience
- Larger Selection of Styles and Colors
- More Fit Options: Ultra Slim, Slim and Modern
- Personalized Customer Service
- Experience and Expertise
- Better Value and Lower Prices

shown:
ALLURE MEN®
Allure Men Heather Grey Clayton Suit - Style 262/N262

**RENT
OR
BUY**
THESE STYLES

DIRECT DELIVERY
HOME • OFFICE • DESTINATION
Convenient delivery options for your wedding party!



RENT OR BUY
OUR MOST POPULAR
DESIGNER SUIT STYLES!

Michael Kors Black Performance Stretch Wedding Suit
Styles 421/N421

Michael Kors Blue Performance Stretch Wedding Suit
Styles 302/N302

Michael Kors Navy Sterling Wedding Suit
Styles 372/N372

Michael Kors Steel Grey Sterling Wedding Suit
Styles 392/N392

Michael Kors Medium Grey Performance Stretch Wedding Suit
Styles 350/N350

Allure Men Heather Grey Clayton Suit
Styles 262/N262



MICHAEL KORS

Black Performance Stretch
Ultra Slim Fit
Wedding Suit

To Rent: see page 19
Style 421

To Buy: see page 56
Style N421



NEW



MICHAEL KORS

Steel Grey Sterling
Slim Fit
Wedding Suit

To Rent: see page 25
Style 392

To Buy: see page 61
Style N392



MICHAEL KORS

Blue Performance Stretch
Ultra Slim Fit
Wedding Suit

To Rent: see page 21
Style 302

To Buy: see page 57
Style N302



MICHAEL KORS

Medium Grey Performance Stretch
Ultra Slim Fit
Wedding Suit

To Rent: see page 20
Style 350

To Buy: see page 60
Style N350



MICHAEL KORS

Navy Sterling
Slim Fit Suit

To Rent: see page 23
Style 372

To Buy: see page 58
Style N372



ALLURE MEN

Heather Grey Clayton
Ultra Slim Fit Suit

To Rent: see page 32
Style 262

To Buy: see page 59
Style N262



MICHAEL KORS

Legacy Performance Stretch Tuxedo

Style 921

Features:

- ▶ Tailored to fit all body types
- ▶ CoolMax® performance stretch fabric
- ▶ Satin notch lapel, side-vented, 30 1/2" length
- ▶ Shown with ultra slim fit pants with buttons to accommodate suspenders

Fabric Content:

CoolMax® / Sorona® / Wool

Size Scale: B - see page 63

Men's coat sizes: 34-66

Boys' coat sizes: 3-18

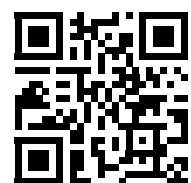
921 pant sizes: 18-65

To order ensemble as shown:

Coat	921
Ultra Slim Fit Pants	921
Shirt (upcharge)	96W
Tie	BSAT
Fullback Vest	F921
Jewelry	BLACK
Formal Shoes (upcharge)	BXS
Pocket Square (purchase only)	PWWH

Black Pant Option:

Ultra Slim Fit Pants	921
----------------------	------------



SCAN ME
for additional images



Trim and tapered styling,
fits close to the body.



To BUY see page 56



MICHAEL KORS

Black Performance Stretch Wedding Suit

Style 421

Features:

- ▶ Tailored to fit all body types
- ▶ CoolMax® performance stretch fabric
- ▶ Self-framed notch lapel, side-vented, 29 1/2" length
- ▶ Shown with ultra slim fit pants with belt loops and buttons to accommodate suspenders

Fabric Content:

CoolMax® / Sorona® / Wool

Size Scale: B - see page 63

Men's coat sizes: 34-66

Boys' coat sizes: 3-18

921 pant sizes: 18-65

To order ensemble as shown:

Coat	421
Ultra Slim Fit Pants	921
Shirt (upcharge)	96W
Tie	WXRW
Fullback Vest	F921
Jewelry	BLACK
Formal Shoes (upcharge)	BXS
Pocket Square (purchase only)	PWRW
Belt (purchase only)	NBLT

Black Pant Option:

Ultra Slim Fit Pants	921
----------------------	------------



SCAN ME
for additional images



Trim and tapered styling,
fits close to the body.



MICHAEL KORS

MEDIUM GREY PERFORMANCE STRETCH WEDDING SUIT STYLE 350

- FEATURES:**
- ▶ TAILORED TO FIT ALL BODY TYPES
 - ▶ COOLMAX® PERFORMANCE STRETCH FABRIC
 - ▶ SELF-FRAMED NOTCH LAPEL, SIDE-VENTED, 29 1/2" LENGTH
 - ▶ SHOWN WITH ULTRA SLIM FIT PANTS WITH BELT LOOPS AND BUTTONS TO ACCOMMODATE SUSPENDERS

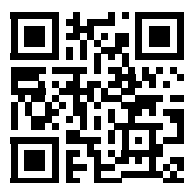
FABRIC CONTENT:
COOLMAX® / SORONA® / WOOL

SIZE SCALE: B - SEE PAGE 63
MEN'S COAT SIZES: 34-66
BOYS' COAT SIZES: 3-18
350 PANT SIZES: 18-65

TO ORDER ENSEMBLE AS SHOWN:

COAT	350
ULTRA SLIM FIT PANTS	350
SHIRT (UPCHARGE)	96W
TIE	BNST
FULLBACK VEST	FNST
JEWELRY	BLACK
FORMAL SHOES (UPCHARGE)	COP
POCKET SQUARE (PURCHASE ONLY)	PNST
BELT (PURCHASE ONLY)	NBLT

Grey Pant Option:
Ultra Slim Fit Pants **350**



SCAN ME
FOR ADDITIONAL IMAGES



Trim and tapered styling,
fits close to the body.



**RENT
OR
BUY**
THIS STYLE

To BUY see page 60



**RENT
OR
BUY**
THIS STYLE

To BUY see page 57



MICHAEL KORS

Blue Performance Stretch Wedding Suit Style 302

- Features:**
- ▶ Tailored to fit all body types
 - ▶ CoolMax® performance stretch fabric
 - ▶ Self-framed notch lapel, side-vented, 30 1/2" length
 - ▶ Shown with ultra slim fit pants with belt loops and buttons to accommodate suspenders

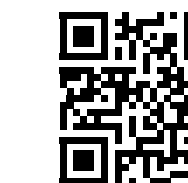
Fabric Content:
CoolMax® / Sorona® / Wool

Size Scale: B - see page 63
Men's coat sizes: 34-66
Boys' coat sizes: 3-18
302 pant sizes: 18-65

To order ensemble as shown:

Coat	302
Ultra Slim Fit Pants	302
Shirt (upcharge)	96W
Tie	WNMB
Fullback Vest	FNMB
Jewelry	BLACK
Formal Shoes (upcharge)	COP
Pocket Square (purchase only)	PNMB
Belt (purchase only)	NBLT

Blue Pant Option:
Ultra Slim Fit Pants **302**



SCAN ME
for additional images



Trim and tapered styling,
fits close to the body.

DIAMOND COLLECTION

DIAMOND COLLECTION

MICHAEL KORS

Navy Sterling Wedding Suit

Style 371

Features:

- ▶ Self-framed notch lapel, side-vented, 30 1/2" length
- ▶ Shown with ultra slim fit pants with belt loops and buttons to accommodate suspenders

Fabric Content:

Venetian Super 130's Wool

Size Scale: E - see page 63

Men's coat sizes: 34-44

Boys' coat sizes: N/A

371 pant sizes: 27-44

Companion Coat:

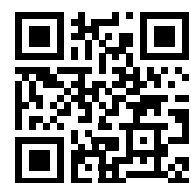
Style 372 - Navy Sterling Slim Fit Wedding Suit; see page 23

To order ensemble as shown:

Coat	371
Ultra Slim Fit Pants	371
Shirt (upcharge)	96W
Tie	BXBL
Fullback Vest	F372
Jewelry	BLACK
Formal Shoes (upcharge)	CXS
Pocket Square (purchase only)	PWWH
Belt (purchase only)	NBLT

Navy Pant Options:

Ultra Slim Fit Pants	371
Modern Slim Fit Pants	372



SCAN ME
for additional images



Trim and tapered styling, fits close to the body.



AVAILABLE IN
TWO FITS:
ULTRA SLIM FIT
Shown
SLIM FIT
See page 23

**RENT
OR
BUY**
THIS STYLE

To BUY see page 58



AVAILABLE IN
TWO FITS:
SLIM FIT
Shown
ULTRA SLIM FIT
See page 22

MICHAEL KORS

Navy Sterling Wedding Suit

Style 372

Features:

- ▶ Self-framed notch lapel, side-vented, 30 1/2" length
- ▶ Shown with modern slim fit pants with belt loops and buttons to accommodate suspenders

Fabric Content:

Venetian Super 130's Wool

Size Scale: B - see page 63

Men's coat sizes: 34-66

Boys' coat sizes: 3-18

372 pant sizes: 18-65

Companion Coat:

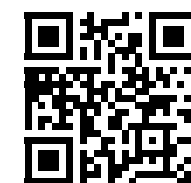
Style 371 - Navy Sterling Ultra Slim Fit Wedding Suit; see page 22

To order ensemble as shown:

Coat	372
Modern Slim Fit Pants	372
Shirt (upcharge)	96W
Tie	WFSE
Fullback Vest	F372
Jewelry	BLACK
Formal Shoes (upcharge)	CXS
Pocket Square (purchase only)	PFSE
Belt (purchase only)	NBLT

Navy Pant Options:

Ultra Slim Fit Pants	371
Modern Slim Fit Pants	372



SCAN ME
for additional images



Contemporary styling with a slimming appearance.

DIAMOND COLLECTION

DIAMOND COLLECTION

MICHAEL KORS

Steel Grey Sterling Wedding Suit

Style 391

Features:

- ▶ Self-framed notch lapel, side-vented, 30 1/2" length
- ▶ Shown with ultra slim fit pants with belt loops and buttons to accommodate suspenders

Fabric Content:

Venetian Super 130's Wool

Size Scale: E - see page 63

Men's coat sizes: 34-44

Boys' coat sizes: N/A

391 pant sizes: 27-44

Companion Coat:

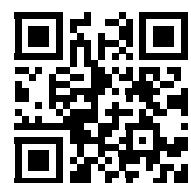
Style 392 - Steel Grey Sterling Slim Fit Wedding Suit; see page 25

To order ensemble as shown:

Coat	391
Ultra Slim Fit Pants	391
Shirt (upcharge)	96W
Tie	WNWI
Fullback Vest	F392
Jewelry	BLACK
Formal Shoes (upcharge)	CXS
Pocket Square (purchase only)	PNWI
Belt (purchase only)	NBLT

Steel Grey Pant Options:

Ultra Slim Fit Pants	391
Modern Slim Fit Pants	392



SCAN ME
for additional images



Trim and tapered styling, fits close to the body.



AVAILABLE IN
TWO FITS:
ULTRA SLIM FIT
Shown
SLIM FIT
See page 25

**RENT
OR
BUY**
THIS STYLE
To BUY see page 61



AVAILABLE IN
TWO FITS:
SLIM FIT
Shown
ULTRA SLIM FIT
See page 24

MICHAEL KORS

Steel Grey Sterling Wedding Suit

Style 392

Features:

- ▶ Self-framed notch lapel, side-vented, 30 1/2" length
- ▶ Shown with modern slim fit pants with belt loops and buttons to accommodate suspenders

Fabric Content:

Venetian Super 130's Wool

Size Scale: B - see page 63

Men's coat sizes: 34-66

Boys' coat sizes: 3-18

392 pant sizes: 18-65

Companion Coat:

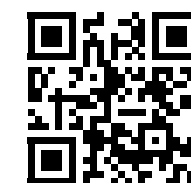
Style 391 - Steel Grey Sterling Ultra Slim Fit Wedding Suit; see page 24

To order ensemble as shown:

Coat	392
Modern Slim Fit Pants	392
Shirt (upcharge)	96W
Tie	BNST
Fullback Vest	F392
Jewelry	BLACK
Formal Shoes (upcharge)	COP
Pocket Square (purchase only)	PNST
Belt (purchase only)	NBLT

Steel Grey Pant Options:

Ultra Slim Fit Pants	391
Modern Slim Fit Pants	392



SCAN ME
for additional images



Contemporary styling with a slimming appearance.

DIAMOND COLLECTION

MICHAEL KORS

Black Sterling Wedding Suit

Style 471

Features:

- ▶ Self-framed notch lapel, side-vented, 30 1/2" length
- ▶ Shown with ultra slim fit pants with belt loops and buttons to accommodate suspenders

Fabric Content:

Venetian Super 130's Wool

Size Scale: E - see page 63

Men's coat sizes: 34-44

Boys' coat sizes: N/A

471 pant sizes: 27-44

Companion Coat:

Style 472 - Black Sterling Slim Fit Wedding Suit; see page 27

To order ensemble as shown:

Coat	471
Ultra Slim Fit Pants	471
Shirt (upcharge)	96W
Tie	BXBL
Fullback Vest	F900
Jewelry	BLACK
Formal Shoes (upcharge)	BXS
Pocket Square (purchase only)	PWWH
Belt (purchase only)	NBLT

Black Pant Options:

Ultra Slim Fit Pants	471
Modern Slim Fit Pants	472



SCAN ME
for additional images



Trim and tapered styling,
fits close to the body.

AVAILABLE IN
TWO FITS:
ULTRA SLIM FIT
Shown
SLIM FIT
See page 27



MICHAEL KORS

Black Sterling Wedding Suit

Style 472

Features:

- ▶ Self-framed notch lapel, side-vented, 30 1/2" length
- ▶ Shown with modern slim fit pants with belt loops and buttons to accommodate suspenders

Fabric Content:

Venetian Super 130's Wool

Size Scale: B - see page 63

Men's coat sizes: 34-66

Boys' coat sizes: 3-18

472 pant sizes: 18-65

Companion Coat:

Style 471 - Black Sterling Ultra Slim Fit Wedding Suit; see page 26

To order ensemble as shown:

Coat	472
Modern Slim Fit Pants	472
Shirt (upcharge)	96W
Tie	BXBL
Fullback Vest	F900
Jewelry	BLACK
Formal Shoes (upcharge)	BXS
Pocket Square (purchase only)	PWWH
Belt (purchase only)	NBLT

Black Pant Options:

Ultra Slim Fit Pants	471
Modern Slim Fit Pants	472



SCAN ME
for additional images



Contemporary styling with
a slimming appearance.

AVAILABLE IN
TWO FITS:
SLIM FIT
Shown
ULTRA SLIM FIT
See page 26



MICHAEL KORS

Berkeley Tuxedo Style 991

Features:

- ▶ Grosgrain notch lapel, side-vented, 30 1/2" length
- ▶ Grosgrain trimmed pockets
- ▶ Shown with ultra slim fit pants with no stripe

Fabric Content:

Venetian Super 130's Wool

Size Scale: E - see page 63

Men's coat sizes: 34-44

Boys' coat sizes: N/A

991 pant sizes: 18-59

Companion Coat:

Style 990 - Berkeley Slim Fit; see page 29

To order ensemble as shown:

Coat	991
Ultra Slim Fit Pants	991
Shirt (upcharge)	96W
Tie	BXBL
Fullback Vest	F900
Jewelry	BLACK
Formal Shoes (upcharge)	BDS
Pocket Square (purchase only)	PWWH

Black Pant Options:

Ultra Slim Fit Pants	991
Modern Slim Fit Pants	990



SCAN ME
for additional images

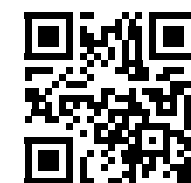


Trim and tapered styling,
fits close to the body.



AVAILABLE IN
TWO FITS:
ULTRA SLIM FIT
Shown
SLIM FIT
See page 29

AVAILABLE IN
TWO FITS:
SLIM FIT
Shown
ULTRA SLIM FIT
See page 28



SCAN ME
for additional images



Contemporary styling with
a slimming appearance.

MICHAEL KORS

Berkeley Tuxedo Style 990

Features:

- ▶ Grosgrain notch lapel, side-vented, 30 1/2" length
- ▶ Grosgrain trimmed pockets
- ▶ Shown with modern slim fit pants with grosgrain piping on the leg

Fabric Content:

Venetian Super 130's Wool

Size Scale: B - see page 63

Men's coat sizes: 34-66

Boys' coat sizes: 3-18

990 pant sizes: 18-65

Companion Coat:

Style 991 - Berkeley Ultra Slim Fit;
see page 28

To order ensemble as shown:

Coat	990
Modern Slim Fit Pants	990
Shirt (upcharge)	96W
Tie	BXBL
Fullback Vest	F900
Jewelry	BLACK
Formal Shoes (upcharge)	BDS
Pocket Square (purchase only)	PWWH

Black Pant Options:

Ultra Slim Fit Pants	991
Modern Slim Fit Pants	990

MICHAEL KORS

Force Performance Stretch Tuxedo

Style 981

Features:

- ▶ Limited size scale
- ▶ CoolMax® performance stretch fabric
- ▶ Grosgrain notch lapel, side-vented, 29 1/2" length
- ▶ Grosgrain trimmed pockets and covered buttons
- ▶ Shown with ultra slim fit pants with belt loops and buttons to accommodate suspenders

Fabric Content:

CoolMax® / Sorona® / Wool

Size Scale: F - see page 63

Men's coat sizes: 34-50 (even sizes only)

Boys' coat sizes: 14-18 (even sizes only)

921 pant sizes: 18-65

To order ensemble as shown:

Coat	981
Ultra Slim Fit Pants	921
Shirt (upcharge)	96W
Tie	WXGO
Fullback Vest	F921
Jewelry	BLACK
Formal Shoes (upcharge)	BXS
Pocket Square (purchase only)	PWGO

Black Pant Option:

Ultra Slim Fit Pants	921
----------------------	------------



ALLURE MEN

Sand Brunswick Suit

Style 202

Features:

- ▶ Tailored to fit all body types
- ▶ Self-framed notch lapel, side-vented, 30" length
- ▶ Shown with ultra slim fit pants with belt loops and buttons to accommodate suspenders

Fabric Content:

60/40 Super 130's Wool Blend

Size Scale: B - see page 63

Men's coat sizes: 34-66

Boys' coat sizes: 3-18

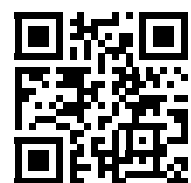
202 pant sizes: 18-65

To order ensemble as shown:

Coat	202
Ultra Slim Fit Pants	202
Shirt (upcharge)	96W
Tie	WFWI
Fullback Vest	F202
Jewelry	BLACK
Formal Shoes (upcharge)	COP
Pocket Square (purchase only)	PFWI
Belt (purchase only)	NBLT

Sand Pant Option:

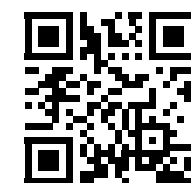
Ultra Slim Fit Pants	202
----------------------	------------



SCAN ME
for additional images



Trim and tapered styling,
fits close to the body.



SCAN ME
for additional images



Trim and tapered styling,
fits close to the body.

ALLURE MEN

Heather Grey Clayton Suit

Style 262

Features:

- ▶ Tailored to fit all body types
- ▶ Self-framed notch lapel, side-vented, 29 1/8" length
- ▶ Shown with ultra slim fit pants with belt loops and buttons to accommodate suspenders

Fabric Content:

Super 130's Wool

Size Scale: B - see page 63

Men's coat sizes: 34-66

Boys' coat sizes: 3-18

262 pant sizes: 18-65

To order ensemble as shown:

Coat	262
Ultra Slim Fit Pants	262
Shirt (upcharge)	96W
Tie	BXNA
Fullback Vest	F262
Jewelry	BLACK
Formal Shoes (upcharge)	CXS
Pocket Square (purchase only)	PWNA

Heather Grey Pant Option:

Ultra Slim Fit Pants	262
----------------------	------------



SCAN ME
for additional images



Trim and tapered styling,
fits close to the body.

**RENT
OR
BUY**
THIS STYLE

To BUY see page 59



I K E EVENING

BY KE BEHAR

Grey Plaid Hamilton Suit

Style 231

Features:

- ▶ Tailored to fit all body types
- ▶ Self notch lapel, flap pockets, side-vented, 30" length
- ▶ Shown with ultra slim fit pants with belt loops and buttons to accommodate suspenders

Fabric Content:

Super 100's Wool

Size Scale: D - see page 63

Men's coat sizes: 34-60

Boys' coat sizes: 3-18

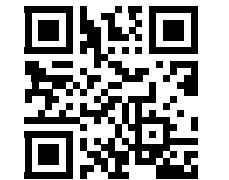
231 pant sizes: 18-59

To order ensemble as shown:

Coat	231
Ultra Slim Fit Pants	231
Shirt (upcharge)	96W
Tie	BXBH
Fullback Vest	EXBH
Jewelry	BLACK
Formal Shoes (upcharge)	CXS
Pocket Square (purchase only)	PWBH
Belt (purchase only)	NBLT

Grey Plaid Pant Option:

Ultra Slim Fit Pants	231
----------------------	------------



SCAN ME
for additional images



Trim and tapered styling,
fits close to the body.

DIAMOND COLLECTION

DIAMOND COLLECTION

**Cobalt Blue
Tribeca Tuxedo**
Style 211

Features:

- ▶ Tailored to fit all body types
- ▶ Black satin peak lapel, side-vented, 30" length
- ▶ Black satin double besom pockets
- ▶ Shown with ultra slim fit pants with no stripe

Fabric Content:

Super 120's Wool

Size Scale: D - see page 63

Men's coat sizes: 34-60

Boys' coat sizes: 3-18

211 pant sizes: 18-59

To order ensemble as shown:

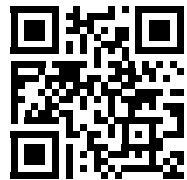
Coat	211
Ultra Slim Fit Pants	211
Shirt (upcharge)	96W
Tie	BXBL
Fullback Vest	EXBL
Jewelry	BLACK
Formal Shoes (upcharge)	BDS
Pocket Square (purchase only)	PWWH

Cobalt Blue Pant Option:

Ultra Slim Fit Pants **211**

Black Pant Options:

Ultra Slim Fit Pants **991**
Modern Slim Fit Pants **990**



SCAN ME
for additional images



Trim and tapered styling,
fits close to the body.



**Indigo Blue
Lane Tuxedo**
Style 221

Features:

- ▶ Tailored to fit all body types
- ▶ Satin-edged peak lapel, side-vented, 29 1/4" length
- ▶ Shown with ultra slim fit pants with no stripe

Fabric Content:

Super 120's Wool

Size Scale: B - see page 63

Men's coat sizes: 34-66

Boys' coat sizes: 3-18

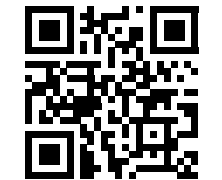
221 pant sizes: 18-65

To order ensemble as shown:

Coat	221
Ultra Slim Fit Pants	221
Shirt (upcharge)	96W
Tie	BXCP
Fullback Vest	EXCP
Jewelry	BLACK
Formal Shoes (upcharge)	CXS
Pocket Square (purchase only)	PWCP

Indigo Blue Pant Option:

Ultra Slim Fit Pants **221**



SCAN ME
for additional images



Trim and tapered styling,
fits close to the body.

KENNETH COLE

Burgundy Empire Tuxedo Style 201

Features:

- ▶ Tailored to fit all body types
- ▶ Black satin peak lapel, side-vented, 30^{1/2}" length
- ▶ Black satin double besom pockets
- ▶ Shown with black ultra slim fit pants with no stripe

Fabric Content:

Super 120's Wool

Size Scale: D - see page 63

Men's coat sizes: 34-60

Boys' coat sizes: 3-18

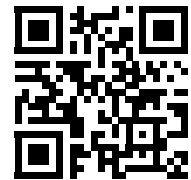
991 pant sizes: 18-59

To order ensemble as shown:

Coat	201
Ultra Slim Fit Pants	991
Shirt (upcharge)	96W
Tie	BSAT
Jewelry	BLACK
Formal Shoes (upcharge)	BDS
Pocket Square (purchase only)	PWWH

Black Pant Options:

Ultra Slim Fit Pants	991
Modern Slim Fit Pants	990



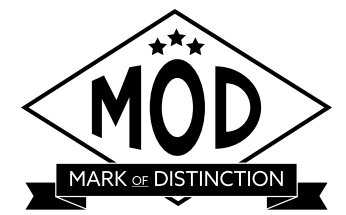
SCAN ME
for additional images



Trim and tapered styling,
fits close to the body.



To BUY see page 28 in the
JFW Purchase Catalog



Apple Red Aries Paisley Tuxedo Style 122

Features:

- ▶ Black satin shawl lapel, side-vented, 30^{1/2}" length
- ▶ Fabric covered buttons
- ▶ Limited size scale
- ▶ Shown with Black Euro Slim Stretch Suit Pants for purchase

Fabric Content:

100% Polyester

Size Scale: F - see page 63

Men's coat sizes: 34-50 (even sizes only)

Boys' coat sizes: 14-18 (even sizes only)

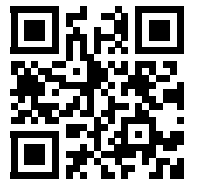
N11P pant sizes: 26-44 (even sizes only)

To order ensemble as shown:

Coat	122
Euro Slim Pants (purchase only)	N11P
Shirt (upcharge)	96W
Tie	BSAT
Jewelry	BLACK
Formal Shoes (purchase only)	NCSSS
Pocket Square (purchase only)	PWBL

Black Pant Options:

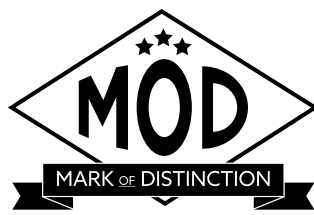
Euro Slim Pants (purchase only)	N11P
Ultra Slim Fit Pants	991
Modern Slim Fit Pants	990



SCAN ME
for additional images



Contemporary styling with
a slimming appearance.



Granite Aries Paisley Tuxedo

Style 192

Features:

- ▶ Black satin shawl lapel, side-vented, 30 1/2" length
- ▶ Fabric covered buttons
- ▶ Limited size scale
- ▶ Shown with Black Euro Slim Stretch Suit Pants for purchase

Fabric Content:

100% Polyester

Size Scale: G - see page 63

Men's coat sizes: 34-66 (even sizes only)

Boys' coat sizes: 3-18 (even sizes only)

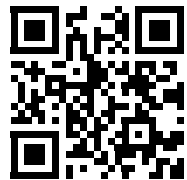
N11P pant sizes: 26-44 (even sizes only)

To order ensemble as shown:

Coat	192
Euro Slim Pants (purchase only)	N11P
Shirt (upcharge)	96W
Tie	BSAT
Jewelry	BLACK
Formal Shoes (purchase only)	NCSSS
Pocket Square (purchase only)	PWBL

Black Pant Options:

Euro Slim Pants (purchase only)	N11P
Ultra Slim Fit Pants	991
Modern Slim Fit Pants	990



SCAN ME
for additional images



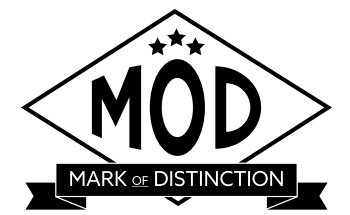
Contemporary styling with a slimming appearance.



To BUY see page 26 in the JFW Purchase Catalog



To BUY see page 25 in the JFW Purchase Catalog



Black Aries Paisley Tuxedo

Style 182

Features:

- ▶ Black satin shawl lapel, side-vented, 30 1/2" length
- ▶ Fabric covered buttons
- ▶ Limited size scale
- ▶ Shown with Black Euro Slim Stretch Suit Pants for purchase

Fabric Content:

100% Polyester

Size Scale: G - see page 63

Men's coat sizes: 34-66 (even sizes only)

Boys' coat sizes: 3-18 (even sizes only)

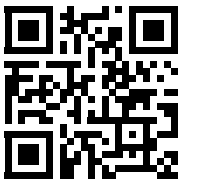
N11P pant sizes: 26-44 (even sizes only)

To order ensemble as shown:

Coat	182
Euro Slim Pants (purchase only)	N11P
Shirt (upcharge)	96W
Tie	BSAT
Jewelry	BLACK
Formal Shoes (purchase only)	NBSKS
Pocket Square (purchase only)	PWWH

Black Pant Options:

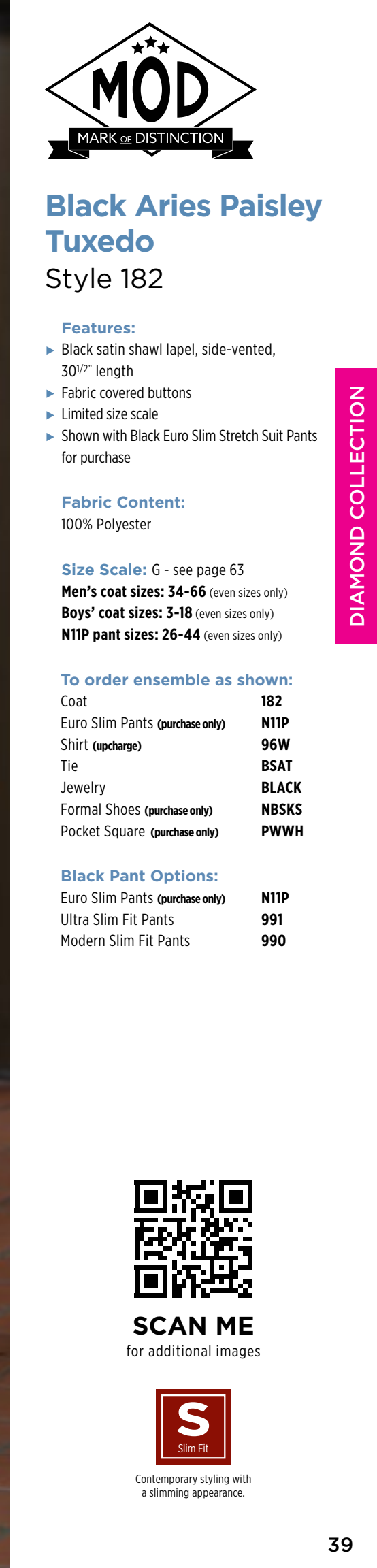
Euro Slim Pants (purchase only)	N11P
Ultra Slim Fit Pants	991
Modern Slim Fit Pants	990



SCAN ME
for additional images

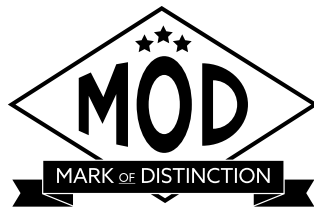


Contemporary styling with a slimming appearance.



DIAMOND COLLECTION

DIAMOND COLLECTION



Cobalt Aries Paisley Tuxedo Style 132

Features:

- ▶ Black satin shawl lapel, side-vented, 30 1/2" length
- ▶ Fabric covered buttons
- ▶ Limited size scale
- ▶ Shown with Black Euro Slim Stretch Suit Pants for purchase

Fabric Content:

100% Polyester

Size Scale: F - see page 63

Men's coat sizes: 34-50 (even sizes only)

Boys' coat sizes: 14-18 (even sizes only)

N11P pant sizes: 26-44 (even sizes only)

To order ensemble as shown:

Coat	132
Euro Slim Pants (purchase only)	N11P
Shirt (upcharge)	96W
Tie	BSAT
Jewelry	BLACK
Formal Shoes (purchase only)	NBLVS
Pocket Square (purchase only)	PWBL

Black Pant Options:

Euro Slim Pants (purchase only)	N11P
Ultra Slim Fit Pants	991
Modern Slim Fit Pants	990



SCAN ME
for additional images



Contemporary styling with a slimming appearance.



To BUY see page 27 in the JFW Purchase Catalog



stephengeoffrey

Heather Grey Aspen Tuxedo Style 362

Features:

- ▶ Satin-edged notch lapel, side-vented, 30 1/2" length
- ▶ Shown with modern slim fit pants with no stripe

Fabric Content:

100% Wool

Size Scale: B - see page 63

Men's coat sizes: 34-66

Boys' coat sizes: 3-18

362 pant sizes: 18-65

To order ensemble as shown:

Coat	362
Modern Slim Fit Pants	362
Shirt (upcharge)	96W
Tie	BXWH
Fullback Vest	F362
Jewelry	BLACK
Formal Shoes (upcharge)	CXS
Pocket Square (purchase only)	PWWH

Grey Pant Options:

Ultra Slim Fit Pants	361
Modern Slim Fit Pants	362



Contemporary styling with a slimming appearance.

Grey Portofino Tuxedo

Style 301

Features:

- ▶ Black satin peak lapel, non-vented, 30" length
- ▶ Black satin double besom pockets
- ▶ Shown with modern slim fit pants with a beaded stripe

Fabric Content:

55/45 Super Fine Wool Blend

Size Scale: B - see page 63

Men's coat sizes: 34-66

Boys' coat sizes: 3-18

850 pant sizes: 18-59

To order ensemble as shown:

Coat	301
Modern Slim Fit Pants	850
Shirt (upcharge)	96W
Tie	WKBL
Fullback Vest	F900
Jewelry	BLACK
Formal Shoes (upcharge)	BDS
Pocket Square (purchase only)	PSWH

Black Pant Options:

Ultra Slim Fit Pants	991
Modern Slim Fit Pants	850



Contemporary styling with a slimming appearance.

Tan Havana Suit
Style 252

Features:

- ▶ Self notch lapel, bone buttons, side-vented, 30" length
- ▶ Shown with modern slim fit pants with no stripe

Fabric Content:

Ultra Fine Poly / Wool Blend

Size Scale: B2 - see page 63

Men's coat sizes: 34-66

Boys' coat sizes: 3-18

252 pant sizes: 18-65

To order ensemble as shown:

Coat	252
Modern Slim Fit Pants	252
Shirt (upcharge)	96W
Tie	WRCP
Fullback Vest	F252
Jewelry	BLACK
Formal Shoes (upcharge)	CXS
Pocket Square (purchase only)	PKWH

Tan Pant Options:

Ultra Slim Fit Pants	251
Modern Slim Fit Pants	252



Contemporary styling with a slimming appearance.



PLATINUM COLLECTION

PLATINUM COLLECTION



stephengeoffrey

Cyprus Tuxedo Style 822

Features:

- ▶ Satin shawl lapel, non-vented, 3 1/2" length
- ▶ Shown with modern slim fit pants with a beaded stripe

Fabric Content:

100% Tropical Worsted Wool

Size Scale: B2 - see page 63

Men's coat sizes: 34-66

Boys' coat sizes: 3-18

850 pant sizes: 18-59

To order ensemble as shown:

Coat	822
Modern Slim Fit Pants	850
Shirt (upcharge)	76W
Tie	WSKG
Fullback Vest	SYKG
Jewelry	BLACK
Formal Shoes (upcharge)	BDS
Pocket Square (purchase only)	PSKG

Black Pant Option:

Modern Slim Fit Pants	850
-----------------------	------------



Fashion-forward styling with a flattering appearance.



stephengeoffrey

Emerson Tuxedo Style 852

Features:

- ▶ Grosgrain notch lapel, non-vented, 3 1/2" length
- ▶ Grosgrain buttons
- ▶ Shown with modern slim fit pants with a beaded stripe

Fabric Content:

100% Tropical Worsted Wool

Size Scale: B2 - see page 63

Men's coat sizes: 34-66

Boys' coat sizes: 3-18

850 pant sizes: 18-59

To order ensemble as shown:

Coat	852
Modern Slim Fit Pants	850
Shirt (upcharge)	96W
Tie	WKLA
Fullback Vest	HRLA
Jewelry	BLACK
Formal Shoes (upcharge)	BDS
Pocket Square (purchase only)	PKLA

Black Pant Option:

Modern Slim Fit Pants	850
-----------------------	------------



Fashion-forward styling with a flattering appearance.



PLATINUM COLLECTION

PLATINUM COLLECTION



stephengeoffrey

Black Troy Tuxedo Style 802

Features:

- ▶ Satin notch lapel, non-vented, 3 1/2" length
- ▶ Shown with modern slim fit pants with a beaded stripe

Fabric Content:

100% Worsted Wool

Size Scale: A2 - see page 63

Men's coat sizes: 34-74

Boys' coat sizes: 3-18

850 pant sizes: 18-59

To order ensemble as shown:

Coat	802
Modern Slim Fit Pants	850
Shirt (upcharge)	96W
Tie	WKSI
Fullback Vest	HRSI
Jewelry	BLACK
Formal Shoes (upcharge)	BDS
Pocket Square (purchase only)	PKSI

Black Pant Option:

Modern Slim Fit Pants	850
-----------------------	------------



Fashion-forward styling with a flattering appearance.



I K E EVENING
BY KE BEHAR

Waverly Tuxedo Style 751

Features:

- ▶ Tailored to fit all body types
- ▶ Self shawl lapel edged in black satin, center-vented, 30" length
- ▶ Shown with black ultra slim fit pants with no stripe

Fabric Content:

100% Polyester

Size Scale: D - see page 63

Men's coat sizes: 34-60

Boys' coat sizes: 3-18

991 pant sizes: 18-59

To order ensemble as shown:

Coat	751
Ultra Slim Fit Pants	991
Shirt (upcharge)	96W
Tie	BXBL
Fullback Vest	EXBL
Jewelry	BLACK
Formal Shoes (upcharge)	BDS
Pocket Square (purchase only)	PWBL

White Pant Option:

Modern Slim Fit Pants	750
-----------------------	------------

Black Pant Options:

Ultra Slim Fit Pants	991
Modern Slim Fit Pants	850



Trim and tapered styling, fits close to the body.

PLATINUM COLLECTION

PLATINUM COLLECTION



stephengeoffrey

White Troy Tuxedo Style 712

Features:

- ▶ Satin notch lapel, non-vented, 3 1/2" length
- ▶ Shown with modern slim fit pants with a beaded stripe

Fabric Content:

100% Polyester

Size Scale: B - see page 63

Men's coat sizes: 34-66

Boys' coat sizes: 3-18

750 pant sizes: 18-65

To order ensemble as shown:

Coat	712
Modern Slim Fit Pants	750
Shirt (upcharge)	96W
Tie	BXWH
Fullback Vest	EXWH
Jewelry	PEARL
Formal Shoes (upcharge)	WAS
Pocket Square (purchase only)	PWWH

White Pant Option:

Modern Slim Fit Pants	750
-----------------------	------------



Fashion-forward styling with a flattering appearance.



stephengeoffrey

Ivory Classic Shawl Tuxedo Style 601

Features:

- ▶ Self shawl lapel, side-vented, 30 1/2" length
- ▶ Shown with black ultra slim fit pants with no stripe

Fabric Content:

100% Polyester

Size Scale: B - see page 63

Men's coat sizes: 34-66

Boys' coat sizes: 3-18

991 pant sizes: 18-59

To order ensemble as shown:

Coat	601
Ultra Slim Fit Pants	991
Shirt (upcharge)	96W
Tie	BSAT
Sash	CUMB
Jewelry	BLACK
Formal Shoes (upcharge)	BDS
Pocket Square (purchase only)	PWBL

Ivory Pant Option:

Modern Slim Fit Pants	650
-----------------------	------------

Black Pant Options:

Ultra Slim Fit Pants	991
Modern Slim Fit Pants	850



To BUY see JFW
For Purchase Catalog



Contemporary styling with a slimming appearance.

PLATINUM COLLECTION

PLATINUM COLLECTION



stephengeoffrey

Ivory Troy Tuxedo Style 602

Features:

- ▶ Satin notch lapel, non-vented, 3 1/2" length
- ▶ Shown with modern slim fit pants with a beaded stripe

Fabric Content:

100% Polyester

Size Scale: B2 - see page 63

Men's coat sizes: 34-66

Boys' coat sizes: 3-18

650 pant sizes: 18-65

To order ensemble as shown:

Coat	602
Modern Slim Fit Pants	650
Shirt (upcharge)	96W
Tie	WRGO
Fullback Vest	HRGO
Jewelry	BLACK
Formal Shoes (upcharge)	COP
Pocket Square (purchase only)	PKGO

Ivory Pant Option:

Modern Slim Fit Pants	650
-----------------------	------------



Fashion-forward styling with a flattering appearance.



Classic Notch Tuxedo Style 820

Features:

- ▶ Satin notch lapel, non-vented, 3 1/2" length
- ▶ Shown with modern slim fit pants with a beaded stripe

Fabric Content:

100% Worsted Wool

Size Scale: A - see page 63; expanded sizes available

Men's coat sizes: 34-74

Boys' coat sizes: 2-18

850 pant sizes: 18-59

To order ensemble as shown:

Coat	820
Modern Slim Fit Pants	850
Shirt	85W
Tie	BSAT
Sash	CUMB
Jewelry	BLACK
Formal Shoes (upcharge)	BAS
Pocket Square (purchase only)	PSWH

Black Pant Option:

Modern Slim Fit Pants	850
-----------------------	------------



A classic, fuller cut tuxedo.



White Classic Shawl Tuxedo

Style 701

Features:

- ▶ Self shawl lapel, flap pockets, non-vented, 30" length
- ▶ Shown with black modern slim fit pants with a beaded stripe

Fabric Content:

100% Polyester

Size Scale: B2 - see page 63

Men's coat sizes: 34-66

Boys' coat sizes: 3-18

850 pant sizes: 18-59

To order ensemble as shown:

Coat	701
Modern Slim Fit Pants	850
Shirt	85W
Tie	BSAT
Sash	CUMB
Jewelry	BLACK
Formal Shoes (upcharge)	BDS
Pocket Square (purchase only)	PSBL

White Pant Option:

Modern Slim Fit Pants **750**

Black Pant Option:

Modern Slim Fit Pants **850**

**RENT
OR
BUY**
THIS STYLE

To BUY see JFW
For Purchase Catalog



Classic Peak Tuxedo

Style 880

Features:

- ▶ Satin peak lapel, center-vented, 31½" length
- ▶ Shown with modern slim fit pants with a beaded stripe

Fabric Content:

100% Worsted Wool

Size Scale: A - see page 63;

expanded sizes available

Men's coat sizes: 34-74

Boys' coat sizes: 2-18

850 pant sizes: 18-59

To order ensemble as shown:

Coat	880
Modern Slim Fit Pants	850
Shirt	85W
Tie	BSAT
Sash	CUMB
Jewelry	BLACK
Formal Shoes (upcharge)	BAS
Pocket Square (purchase only)	PSWH

Black Pant Option:

Modern Slim Fit Pants **850**



Contemporary styling with a slimming appearance.



A classic, fuller cut tuxedo.

**Classic Peak
Fulldress Tuxedo**
Style 588

Features:

- ▶ Six-button fulldress styling
- ▶ Satin peak lapel, center-vented tail, 42" length
- ▶ Shown with modern slim fit pants with a beaded stripe

Fabric Content:

100% Tropical Worsted Wool

Size Scale: D - see page 63

Men's coat sizes: 34-60

Boys' coat sizes: 3-18

850 pant sizes: 18-59

To order ensemble as shown:

Coat	588
Modern Slim Fit Pants	850
Shirt	36W
Tie	BPIQ
Vest	VPIQ
Jewelry	PEARL
Formal Shoes (upcharge)	BAS
Pocket Square (purchase only)	PSWH

Black Pant Option:

Modern Slim Fit Pants	850
-----------------------	------------



**SUITS
TUXEDOS
ACCESSORIES**

for purchase

Reference the "For Purchase" catalog for additional items





RENT OR BUY THIS STYLE

To RENT see page 19

MICHAEL KORS

BLACK PERFORMANCE STRETCH WEDDING SUIT



SEPARATES COLLECTION
Mix and match your coat and pant sizes for the perfect fit.

RENT OR BUY THIS STYLE

To RENT see page 21

MICHAEL KORS

BLUE PERFORMANCE STRETCH WEDDING SUIT



SEPARATES COLLECTION
Mix and match your coat and pant sizes for the perfect fit.



Black Performance Stretch Suit Coat | N421C
Slim fit; 2-button; flap pockets; side-vented; mitered sleeves with buttons

\$329.99
Coat Purchase Price

Black Performance Stretch Pants | N921P
Slim fit; flat front; exact waist; belt loops; buttons to accommodate suspenders

\$150.00
Pant Purchase Price

Black Performance Stretch Fullback Vest | NF921
4-button; adjustable back; darted pockets

\$79.99
Fullback Vest Purchase Price

Fabric Content: CoolMax® / Sorona® / Wool

Coat Sizing: Regular: 34-66
Short: 34-56
Long: 34-66
X-Long: 38-56 (even sizes only)
Pant Sizing: Regular: 28-66
Short: 28-66
Long: 28-66 (even sizes only)

Vest Sizing:
RXS - 5XA

Blue Performance Stretch Suit Coat | N302C
Slim fit; 2-button; flap pockets; side-vented; mitered sleeves with buttons

\$329.99
Coat Purchase Price

Blue Performance Stretch Suit Pants | N302P
Slim fit; flat front; exact waist; belt loops; buttons to accommodate suspenders

\$150.00
Pant Purchase Price

Blue Performance Stretch Fullback Vest | NF302
4-button; adjustable back; darted pockets

\$79.99
Fullback Vest Purchase Price

Fabric Content: CoolMax® / Sorona® / Wool

Coat Sizing: Regular: 34-66
Short: 34-56
Long: 34-66
X-Long: 38-56 (even sizes only)
Pant Sizing: Regular: 28-66
Short: 28-66
Long: 28-66 (even sizes only)

Vest Sizing:
RXS - 5XA

Also Shown: Floral Windsor Tie | NWFPT - see page 31 or JFW "For Purchase" catalog

Also Shown: Striped Windsor Tie | NWXSE - see page 29 in JFW "For Purchase" catalog



RENT OR BUY THIS STYLE

To RENT see page 23

MICHAEL KORS

NAVY STERLING WEDDING SUIT

SEPARATES COLLECTION
Mix and match your coat and pant sizes for the perfect fit.



RENT OR BUY THIS STYLE

To RENT see page 32

ALLURE MEN®

HEATHER GREY CLAYTON SUIT

SEPARATES COLLECTION
Mix and match your coat and pant sizes for the perfect fit.

Navy Sterling Suit Coat | N372C
Slim fit; 2-button; flap pockets; side-vented; mitered sleeves with buttons

\$329.99
Coat Purchase Price

Navy Sterling Suit Pants | N372P
Slim fit; flat front; exact waist; belt loops; buttons to accommodate suspenders

\$150.00
Pant Purchase Price

Navy Sterling Fullback Vest | NF372
4-button; adjustable back; darted pockets

\$79.99
Fullback Vest Purchase Price

Fabric Content: Super 130's Wool

Coat Sizing: Regular: 34-66
Short: 34-56
Long: 34-66
X-Long: 38-56 (even sizes only)
Pant Sizing: Regular: 28-66
Short: 28-66
Long: 28-66 (even sizes only)

Vest Sizing:
RXS - 5XA

Heather Grey Clayton Suit Coat | N262C
Slim fit; 2-button; flap pockets; side-vented; mitered sleeves with buttons

\$329.99
Coat Purchase Price

Heather Grey Clayton Suit Pants | N262P
Slim fit; flat front; exact waist; belt loops; buttons to accommodate suspenders

\$150.00
Pant Purchase Price

Heather Grey Clayton Fullback Vest | NF262
5-button; adjustable back; darted pockets

\$79.99
Fullback Vest Purchase Price

Fabric Content: Super 130's Wool

Coat Sizing: Regular: 34-66
Short: 34-56
Long: 34-66
X-Long: 38-56 (even sizes only)
Pant Sizing: Regular: 28-66
Short: 28-66
Long: 28-66 (even sizes only)

Vest Sizing:
RXS - 5XA

Also Shown: Floral Windsor Tie | NWFSE - see page 31 in JFW "For Purchase" catalog

Also Shown: Solid Bow Tie | NBXNA - see page 32 in JFW "For Purchase" catalog

RENT OR BUY



RENT OR BUY THIS STYLE

To RENT see page 20

MICHAEL KORS

MEDIUM GREY PERFORMANCE STRETCH WEDDING SUIT



SEPARATES COLLECTION Mix and match your coat and pant sizes for the perfect fit.

RENT OR BUY



RENT OR BUY THIS STYLE

To RENT see page 25

MICHAEL KORS

STEEL GREY STERLING WEDDING SUIT

SEPARATES COLLECTION Mix and match your coat and pant sizes for the perfect fit.

Medium Grey Performance Stretch Suit Coat | N350C

Slim fit; 2-button; flap pockets; side-vented; mitered sleeves with buttons

\$329.99

Coat Purchase Price

Medium Grey Performance Stretch Suit Pants | N350P

Slim fit; flat front; exact waist; belt loops; buttons to accommodate suspenders

\$150.00

Pant Purchase Price

Medium Grey Performance Stretch Fullback Vest | NF350

4-button; adjustable back; darted pockets

\$79.99

Fullback Vest Purchase Price

Fabric Content: CoolMax® / Sorona® / Wool

Coat Sizing: Regular: 34-66 Short: 34-56 Long: 34-66 X-Long: 38-56 (even sizes only) Pant Sizing: Regular: 28-66 Short: 28-66 Long: 28-66 (even sizes only)

Vest Sizing: RXS - 5XA

Steel Grey Sterling Suit Coat | N392C

Slim fit; 2-button; flap pockets; side-vented; mitered sleeves with buttons

\$329.99

Coat Purchase Price

Steel Grey Sterling Suit Pants | N392P

Slim fit; flat front; exact waist; belt loops; buttons to accommodate suspenders

\$150.00

Pant Purchase Price

Steel Grey Sterling Fullback Vest | NF392

4-button; adjustable back; darted pockets

\$79.99

Fullback Vest Purchase Price

Fabric Content: Super 130's Wool

Coat Sizing: Regular: 34-66 Short: 34-56 Long: 34-66 X-Long: 38-56 (even sizes only) Vest Sizing: RXS - 5XA

Pant Sizing: Regular: 28-66 Short: 28-66 Long: 28-66 (even sizes only)

Also Shown: Solid Windsor Tie | NWWFB - see page 33 in JFW "For Purchase" catalog

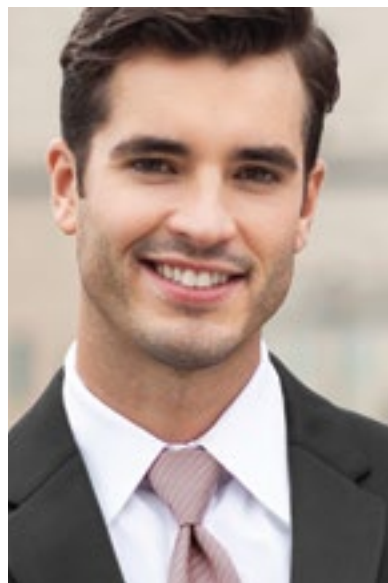
Also Shown: Solid Bow Tie | NBXBL - see page 32 in JFW "For Purchase" catalog



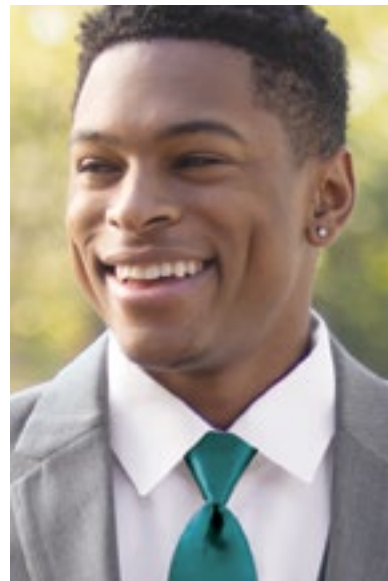
MICHAEL KORS WINDSOR TIES

\$39.99
Striped, Solid & Floral Windsor Ties for Purchase

Available in men's regular and long sizes only. Boys' sizes not available for purchase. Rental styles are pre-tied.



Striped Windsor Ties
available in 28 colors self-tie



Solid Windsor Ties
available in 25 colors self-tie



Floral Windsor Ties
available in 25 colors self-tie



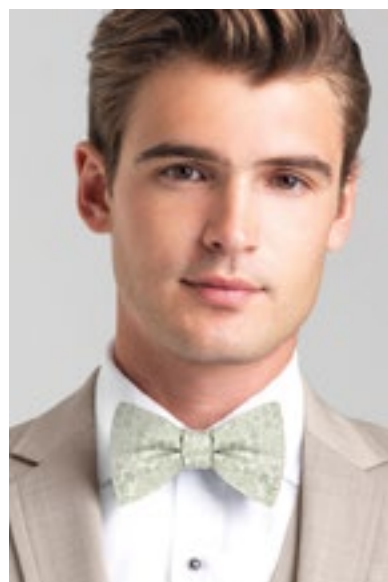
MICHAEL KORS BOW TIES

\$34.99
Solid & Floral Bow Ties for Purchase

Available in men's sizes only. Boys' sizes not available for purchase.



Solid Bow Ties
available in 15 colors pre-tied



Floral Bow Ties
available in 18 colors pre-tied

SIZE SCALE REFERENCE GUIDE

Coat Sizing Scales

Use these sizing scales as guides to see which styles are available in a particular size.

SCALE A	
MEN'S	
Regular	34-74
Portly Regular	40-60
Short	34-60
Long	36-74
Extra Long	38-66
BOYS'	
Regular	2-18
Husky	8-18
Coats available in this scale:	
820 page 51	880 page 53

SCALE B2				
MEN'S				
Regular	34-66			
Short	34-56			
Long	36-66			
Extra Long	38-56			
BOYS'				
Regular	3-18			
Husky	8-16			
Coats available in this scale:				
252 page 43	602 page 50	701 page 52	822 page 44	852 page 45

SCALE F		
MEN'S		
Regular	34-50	
Short	34-50	
Long	34-50	
Extra Long	38-50	
BOYS'		
Regular	14-18	
Husky	N/A	
Coats available in this scale:		
122 page 37	132 page 40	981 page 30

Note: Even sizes only.

SCALE A2	
MEN'S	
Regular	34-74
Short	34-60
Long	36-74
Extra Long	38-66
BOYS'	
Regular	3-18
Husky	8-16
Coats available in this scale:	
802 page 46	

SCALE D				
MEN'S				
Regular	34-60			
Short	34-50			
Long	36-60			
Extra Long	38-50			
BOYS'				
Regular	3-18			
Husky	N/A			
Coats available in this scale:				
201 page 36	211 page 34	231 page 33	588 page 54	751 page 47

Note: In size scale D, coat style 588 is available up to 68L and 68R. (All other sizing in size scale D applies.)

SCALE G	
MEN'S	
Regular	34-66
Short	34-56
Long	34-66
Extra Long	38-56
BOYS'	
Regular	3-18
Husky	N/A
Coats available in this scale:	
182 page 39	192 page 38

Note: Even sizes only.

SCALE B					
MEN'S					
Regular	34-66				
Short	34-56				
Long	34-66				
Extra Long	38-56				
BOYS'					
Regular	3-18				
Husky	8-16				
Coats available in this scale:					
202 page 31	221 page 35	262 pages 17, 32, 59	301 page 42	302 pages 16, 21, 57	350 pages 17, 20, 60
362 page 41	372 pages 16, 23, 58	392 pages 17, 25, 61	421 pages 16, 19, 56	472 page 27	601 page 49
712 page 48	921 page 18	990 page 29			

SCALE E			
MEN'S			
Regular	34-44		
Short	34-44		
Long	34-44		
Extra Long	38-44		
BOYS'			
Regular	N/A		
Husky	N/A		
Coats available in this scale:			
371 page 22	391 page 24	471 page 26	991 page 28

Note: 371, 391 and 471 pants available in sizes 27-44. 991 pant available in sizes 18-59.

COAT FITS DEFINED



T
Traditional Fit

A classic, fuller cut tuxedo.



Narrower lapel

Narrower through the body

M
Modern Fit

Fashion-forward styling with a flattering silhouette.



Slimmer lapel

Narrower through the body yet same waist dimension as Modern Fit

Shorter jacket

S
Slim Fit

Contemporary styling with a slimming appearance.

COAT FITS DEFINED



Trim, and tapered silhouette; fits close to the body

Slimmer throughout the arms

Shorter jacket

U
Ultra Slim Fit

Trim and tapered styling, fits close to the body.

About the Different Fits:

Any gentleman - including Big and Tall - can wear any of the fits! All of our styles work well with all body types. The only difference between the fits is the tuxedo or suit's silhouette.

About the Different Fits:

Any gentleman - including Big and Tall - can wear any of the fits! All of our styles work well with all body types. The only difference between the fits is the tuxedo or suit's silhouette.

PANT FITS DEFINED



Modern Slim Fit Pants

Pant Styles:

252+ 372~ 472~ 750* 990•
362+ 392~ 650* 850*

Ultra Slim Fit Pants

Pant Styles:

202~ 231~ 302~ 371~ 921~
211+ 251+ 350~ 391~ 991+
221+ 262~ 361+ 471~

- * pant styles with a beaded stripe
- + pant styles with no stripe
- pant styles with a faille piped leg stripe
- ~ pant styles with no stripe, buttons for suspenders & belt loops

NOTE:
See page 67 for information about Pant Breaks

PANT FITS DEFINED

Every detail of your ensemble is important, including the break in your pants. Use this guide to help you achieve your preferred look.



Full Break

Deduct 0"

from the outseam measurement to achieve this break

Recommended Pant Styles:
Modern Slim, Flat Front



Half Break

Deduct 1"

from the outseam measurement to achieve this break

Recommended Pant Styles:
Modern Slim, Flat Front



Quarter Break

Deduct 1.5"

from the outseam measurement to achieve this break

Recommended Pant Styles:
Ultra Slim



No Break

Deduct 2"

from the outseam measurement to achieve this break

Recommended Pant Styles:
Ultra Slim, Euro Slim

How To Order:

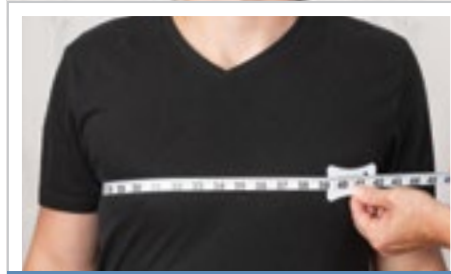
Refer to the Measuring Techniques on page 68 for instructions to measure a pant outseam. When ordering, deduct the recommended number of inches as shown above from the actual pant outseam measurement to achieve desired break.

NOTE: See page 66 for information about Pant Fits

MEASURING TECHNIQUES

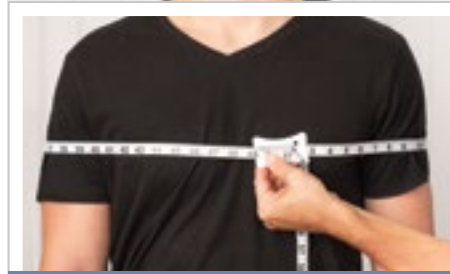
NO LOOSE MEASUREMENTS OR FINGERS UNDER THE MEASURING TAPE

Always record the customer's height & weight, as well as his fit preference (regular or tighter fit)



CHEST

Ask the customer to move his arms outward. Place the tape under his arms and around the broadest part of his chest. Have the customer lower his arms to his side and relax. **Stand to the side of the customer to ensure the tape is level on both sides. Pull the tape until you feel tension and then record your measurement.**



OVERARM

With the customer's arms at his side, place the tape around the broadest part of the chest and arms. Stand to the side of the customer to ensure the tape is level on both sides. **Pull the tape until you feel tension and then record your measurement.**



NECK

Place tape around neck at the level where the shirt's collar would be buttoned. Add 1" to the measurement for the correct neck size. In the example above, a 15.5" neck measurement was taken, so a 16.5" neck size would be recorded.



HIP

Ask the customer to remove any items from his pockets. Stand to the side of the customer and place the tape around the broadest part of his hip and rear. **Pull the tape until you feel tension and record your measurement.**



PANT WAIST

Place the tape around customer's waist at the level he wears his pants, preferably an inch below his navel. **Pull the tape until you feel tension and record your measurement.**

The customer's hip measurement minus 6 inches informs us that they cannot wear a waist smaller than that number. **Example: 40" hip minus 6" = 34" waist; this customer could not wear a 32" waist pant. Record the larger size, 34" pant waist.**



PANT WAIST

When a customer requests to wear his pants below his stomach, **place the tape around his waist, under his stomach. Pull the tape snug on customers with a stomach. RECORD AS THE PANT WAIST MEASUREMENT.**



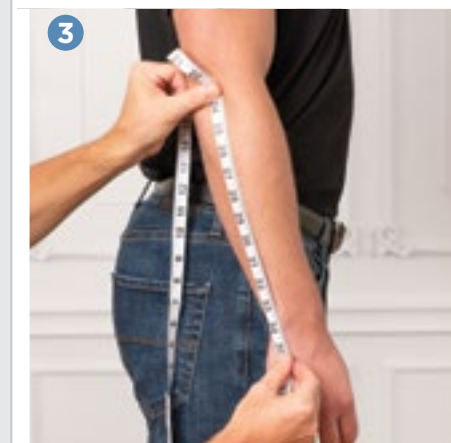
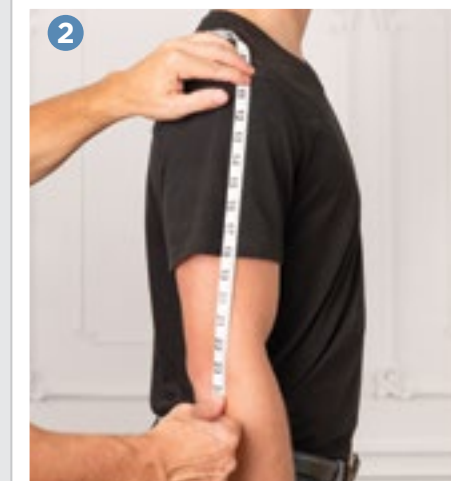
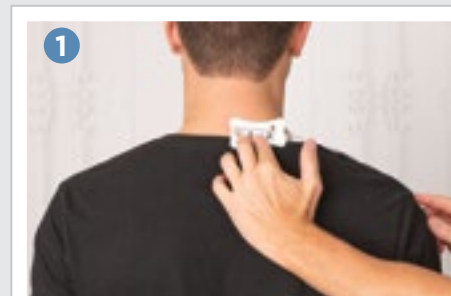
OUTSEAM

Ask the customer to **REMOVE HIS SHOES** and look straight ahead during the measurement process. Start the tape measure level with the top of the waistband at the back of his pant and stretch the tape to the floor (with the customer's shoes off). Adjust and record the customer's outseam measurement. **Subtract 1" from the measurement if there is no pant break preference.**



STOMACH

Place the tape around the widest part of the customer's stomach. **This measurement helps determine the proper shirt and coat size for the customer. DO NOT RECORD AS THE WAIST MEASUREMENT.**



SHIRT SLEEVE

1 Start the tape at the base of the neck centered with the spine. Make sure the tape measure goes over the top of the customer's shoulder. 2 Take the tape down the arm to the point of their elbow 3 and then **measure an inch past the wrist bone.** It is always better to measure long versus short because a sleeve that is too short will likely be unacceptable to your customer.

COAT SIZING GUIDE

Coat	Chest	Overarm	Waist	Hip	Inseam	Outseam	Neck	Sleeve	Height	Weight
34S	32 - 34	41 - 43	26 - 28	32 - 34	< 30.5	< 40.5	14 - 15.5	32 - 33	< 5' 8"	95 - 115
35S	33 - 35	42 - 44	27 - 29	33 - 35	< 30.5	< 40.5	14 - 15.5	32 - 33	< 5' 8"	105 - 125
36S	34 - 36	43 - 45	27 - 30	33 - 36	< 30.5	< 40.5	14 - 15.5	32 - 33	< 5' 8"	115 - 135
37S	35 - 37	44 - 46	28 - 31	34 - 37	< 30.5	< 40.5	14.5 - 15.5	32 - 33	< 5' 8"	125 - 145
38S	36 - 38	45 - 47	29 - 32	35 - 38	< 30.5	< 40.5	14.5 - 15.5	32 - 33	< 5' 8"	135 - 155
39S	37 - 39	46 - 48	30 - 33	36 - 39	< 30.5	< 40.5	15 - 16.5	32 - 33	< 5' 8"	145 - 165
40S	38 - 40	47 - 49	30 - 34	36 - 40	< 30.5	< 40.5	15 - 16.5	32 - 33	< 5' 8"	150 - 170
41S	39 - 41	48 - 50	31 - 35	37 - 41	< 30.5	< 40.5	15.5 - 16.5	32 - 33	< 5' 8"	155 - 175
42S	40 - 42	49 - 51	32 - 36	38 - 42	< 30.5	< 40.5	15.5 - 16.5	32 - 33	< 5' 8"	160 - 180
43S	41 - 43	50 - 52	33 - 37	39 - 43	< 30.5	< 40.5	16 - 17.5	32 - 33	< 5' 8"	170 - 190
44S	42 - 44	51 - 53	34 - 39	40 - 45	< 30.5	< 40.5	16 - 17.5	32 - 33	< 5' 8"	180 - 200
46S	44 - 46	53 - 55	36 - 41	42 - 47	< 30.5	< 40.5	16 - 17.5	32 - 33	< 5' 8"	190 - 215
48S	46 - 48	55 - 57	38 - 44	44 - 50	< 30.5	< 40.5	17 - 18.5	32 - 33	< 5' 8"	200 - 230
50S	48 - 50	57 - 59	40 - 46	46 - 52	< 30.5	< 40.5	17 - 18.5	32 - 33	< 5' 8"	210 - 250
34R	32 - 34	41 - 43	26 - 28	32 - 34	29 - 33	39 - 43	14 - 15.5	34 - 35	5' 8" - 6'	105 - 125
35R	33 - 35	42 - 44	27 - 29	33 - 35	29 - 33	39 - 43	14 - 15.5	34 - 35	5' 8" - 6'	115 - 135
36R	34 - 36	43 - 45	27 - 30	33 - 36	29 - 33	39 - 43	14 - 15.5	34 - 35	5' 8" - 6'	125 - 145
37R	35 - 37	44 - 46	28 - 31	34 - 37	29 - 33	39 - 43	14.5 - 15.5	34 - 35	5' 8" - 6'	130 - 150
38R	36 - 38	45 - 47	29 - 32	35 - 38	29 - 33	39 - 43	14.5 - 15.5	34 - 35	5' 8" - 6'	140 - 160
39R	37 - 39	46 - 48	30 - 33	36 - 39	29 - 33	39 - 43	15 - 16.5	34 - 35	5' 8" - 6'	150 - 170
40R	38 - 40	47 - 49	30 - 34	36 - 40	29 - 33	39 - 43	15 - 16.5	34 - 35	5' 8" - 6'	160 - 180
41R	39 - 41	48 - 50	31 - 35	37 - 41	29 - 33	39 - 43	15.5 - 16.5	34 - 35	5' 8" - 6'	170 - 190
42R	40 - 42	49 - 51	32 - 36	38 - 42	29 - 33	39 - 43	15.5 - 16.5	34 - 35	5' 8" - 6'	175 - 195
43R	41 - 43	50 - 52	33 - 37	39 - 43	29 - 33	39 - 43	16 - 17.5	34 - 35	5' 8" - 6'	185 - 205
44R	42 - 44	51 - 53	34 - 40	40 - 45	29 - 33	39 - 43	16 - 17.5	34 - 35	5' 8" - 6'	195 - 215
46R	44 - 46	53 - 55	36 - 42	42 - 47	29 - 33	39 - 43	16.5 - 17.5	34 - 35	5' 8" - 6'	205 - 225
48R	46 - 48	55 - 57	38 - 44	44 - 50	29 - 33	39 - 43	17 - 18.5	34 - 35	5' 8" - 6'	220 - 240
50R	48 - 50	57 - 59	40 - 47	46 - 53	29 - 33	39 - 43	17 - 18.5	34 - 35	5' 8" - 6'	240 - 260
52R	50 - 52	59 - 61	42 - 49	48 - 54	29 - 33	39 - 43	17 - 18.5	34 - 35	5' 8" - 6'	260 - 275
54R	52 - 54	61 - 63	44 - 51	50 - 56	29 - 33	39 - 43	18 - 19.5	34 - 35	5' 8" - 6'	275 - 290
56R	54 - 56	63 - 65	46 - 53	52 - 58	29 - 33	39 - 43	18 - 20.5	34 - 35	5' 8" - 6'	290 - 300
58R	56 - 58	65 - 67	48 - 55	54 - 60	29 - 33	39 - 43	18 - 20.5	34 - 35	5' 8" - 6'	300 - 310
60R	58 - 60	67 - 69	50 - 57	56 - 62	29 - 33	39 - 43	19 - 22.5	34 - 35	5' 8" - 6'	310 - 330
62R	60 - 62	69 - 71	52 - 59	58 - 64	29 - 33	39 - 43	20 - 22.5	34 - 35	5' 8" - 6'	320 - 340
64R	62 - 64	71 - 73	54 - 61	60 - 66	29 - 33	39 - 43	21 - 24	34 - 35	5' 8" - 6'	340 - 350
66R	64 - 66	73 - 75	56 - 63	62 - 68	29 - 33	39 - 43	23 - 26	34 - 35	5' 8" - 6'	350 - 370
34L	32 - 34	41 - 43	26 - 28	32 - 34	33 - 35.5	43 - 45.5	14 - 15.5	36 - 37	6' - 6' 3"	115 - 135
35L	33 - 35	42 - 44	27 - 29	33 - 35	33 - 35.5	43 - 45.5	14.5 - 15.5	36 - 37	6' - 6' 3"	125 - 145
36L	34 - 36	43 - 45	27 - 30	33 - 36	33 - 35.5	43 - 45.5	14 - 15.5	36 - 37	6' - 6' 3"	135 - 155
37L	35 - 37	44 - 46	28 - 31	34 - 37	33 - 35.5	43 - 45.5	14.5 - 15.5	36 - 37	6' - 6' 3"	140 - 160
38L	36 - 38	45 - 47	29 - 32	35 - 38	33 - 35.5	43 - 45.5	14.5 - 15.5	36 - 37	6' - 6' 3"	150 - 175
39L	37 - 39	46 - 48	30 - 33	36 - 39	33 - 35.5	43 - 45.5	15 - 16.5	36 - 37	6' - 6' 3"	155 - 185
40L	38 - 40	47 - 49	30 - 34	36 - 40	33 - 35.5	43 - 45.5	15 - 16.5	36 - 37	6' - 6' 3"	160 - 185
41L	39 - 41	48 - 50	31 - 35	37 - 41	33 - 35.5	43 - 45.5	15.5 - 16.5	36 - 37	6' - 6' 3"	170 - 190
42L	40 - 42	49 - 51	32 - 36	38 - 42	33 - 35.5	43 - 45.5	15.5 - 16.5	36 - 37	6' - 6' 3"	175 - 200
43L	41 - 43	50 - 52	33 - 37	39 - 43	33 - 35.5	43 - 45.5	16 - 17.5	36 - 37	6' - 6' 3"	185 - 210
44L	42 - 44	51 - 53	34 - 40	40 - 45	33 - 35.5	43 - 45.5	16 - 17.5	36 - 37	6' - 6' 3"	200 - 225
46L	44 - 46	53 - 55	36 - 42	42 - 47	33 - 35.5	43 - 45.5	16.5 - 17.5	36 - 37	6' - 6' 3"	210 - 235
48L	46 - 48	55 - 57	38 - 44	44 - 50	33 - 35.5	43 - 45.5	17 - 18.5	36 - 37	6' - 6' 3"	220 - 245
50L	48 - 50	57 - 59	40 - 47	46 - 52	33 - 35.5	43 - 45.5	17 - 18.5	36 - 37	6' - 6' 3"	240 - 265
52L	50 - 52	59 - 61	42 - 49	48 - 54	33 - 35.5	43 - 45.5	17 - 18.5	36 - 37	6' - 6' 3"	250 - 275
54L	52 - 54	61 - 63	44 - 51	50 - 56	33 - 35.5	43 - 45.5	18 - 19.5	36 - 37	6' - 6' 3"	265 - 290
56L	54 - 56	63 - 65	46 - 53	52 - 58	33 - 35.5	43 - 45.5	18 - 20.5	36 - 37	6' - 6' 3"	280 - 305
58L	56 - 58	65 - 67	48 - 55	54 - 60	33 - 35.5	43 - 45.5	18 - 20.5	36 - 37	6' - 6' 3"	295 - 315
60L	58 - 60	67 - 69	50 - 57	56 - 62	33 - 35.5	43 - 45.5	19 - 22.5	36 - 37	6' - 6' 3"	305 - 330
62L	60 - 62	69 - 71	52 - 59	58 - 64	33 - 35.5	43 - 45.5	20 - 22.5	36 - 37	6' - 6' 3"	315 - 340
64L	62 - 64	71 - 73	54 - 61	60 - 66	33 - 35.5	43 - 45.5	21 - 24	36 - 37	6' - 6' 3"	325 - 350
66L	64 - 66	73 - 75	56 - 63	62 - 68	33 - 35.5	43 - 45.5	23 - 26	36 - 37	6' - 6' 3"	350 - 375
38XL	36 - 38	45 - 47	28 - 32	34 - 38	> 35	> 44	15 - 16.5	38 - 39	> 6' 3"	155 - 180
39XL	37 - 39	46 - 48	30 - 33	36 - 39	> 35	> 44	15 - 16.5	38 - 39	> 6' 3"	160 - 185
40XL	38 - 40	47 - 49	30 - 34	36 - 40	> 35	> 44	15 - 16.5	38 - 39	> 6' 3"	165 - 190
42XL	40 - 42	49 - 51	32 - 36	38 - 42	> 35	> 44	15 - 16.5	38 - 39	> 6' 3"	180 - 205
44XL	42 - 44	51 - 53	34 - 40	40 - 46	> 35	> 44	16 - 17.5	38 - 39	> 6' 3"	200 - 230
46XL	44 - 46	53 - 55	36 - 42	42 - 48	> 35	> 44	16.5 - 17.5	38 - 39	> 6' 3"	215 - 240
48XL	46 - 48	55 - 57	38 - 44	44 - 50	> 35	> 44	17 - 18.5	38 - 39	> 6' 3"	230 - 270
50XL	48 - 50	57 - 59	40 - 46	46 - 52	> 35	> 44	17 - 18.5	38 - 39	> 6' 3"	240 - 290
52XL	50 - 52	59 - 61	42 - 48	48 - 54	> 35	> 44	17 - 18.5	38 - 39	> 6' 3"	250 - 300

short

regular

long

x-long

ADDITIONAL SIZING GUIDES

BOYS' FORMALWEAR MEASUREMENT GUIDE							
Age / Size	Height	Chest	Waist	Inseam	Outseam	Sleeve	Shirt
2	36"	22.5"	17 - 18"	13"	20"	18"	10-10.5" x 20"
3	38"	23"	19 - 20"	15"	22"	19"	10-10.5" x 20"
4	42"	24"	20 - 21"	15.5"	23"	20"	10-10.5" x 20"
5	45"	25"	21 - 22"	16.5"	24"	21"	11-11.5" x 22"
6	48"	25.5"	22 - 23"	18"	25.5"	22"	11-11.5" x 22"
7	50"	26"	23" - 24"	19.5"	27"	23"	11-11.5" x 24"
8	52"	26.5"	24"	21"	29"	24"	11-11.5" x 24"
9	54"	27.5"	24 - 25"	22.5"	31"	25"	12-12.5" x 26"
10	55"	28"	25"	24.5"	33"	26"	12-12.5" x 26"
11	57"	28.5"	25 - 26"	25"	33.5"	27"	12-12.5" x 28"
12	59"	29.5"	26"	26"	35"	28"	12-12.5" x 28"
13	60"	30.5"	26 - 27"	26.5"	35.5"	29"	13-13.5" x 30"
14	62"	31"	26 - 27"	27.5"	36.5"	30"	13-13.5" x 30"
15	63"	31.5"	27 - 28"	28.5"	38"	31"	13-13.5" x 32"
16	64"	32.5"	27 - 28"	29.5"	39"	31"	13-13.5" x 32"
17	65"	33.5"	28 - 29"	30"	39.5"	32"	13-13.5" x 32"
18	67"	34"	28 - 29"	30.5"	40.5"	32"	14-14.5" x 32"

BOYS' HUSKY SIZE GUIDE			
Age / Size	Height	Chest	Waist
8	51"	27.5"	26"
10	54"	28.5"	27"
12	58"	30.5"	28"
14	61"	32"	30"
16	63"	34"	32"

Note: Boys' Husky size coats are normally 1" shorter in the sleeves and 1/2" shorter in the body than a standard boy's size tuxedo jacket.

BOYS' SHIRT SIZE GUIDE			
Shirt Size	Neck	Max. Sleeve	Max. Mid-Section*
X-Small	10" - 10.5"	20"	23"
Small	11" - 11.5"	24"	27"
Medium	12" - 12.5"	28"	31"
Large	13" - 13.5"	32"	35"

***Note:** The Max Mid-Section measurement can be achieved by measuring around the largest part of the gentleman's stomach.

ADJUSTABLE PANT WAIST RANGE	
27 - 28 - 29	51 - 52 - 53
30 - 31 - 32	54 - 55 - 56
33 - 34 - 35	57 - 58 - 59
36 - 37 - 38	60 - 61 - 62
39 - 40 - 41	63 - 64 - 65
42 - 43 - 44	66 - 67 - 68
45 - 46 - 47	69 - 70 - 71
48 - 49 - 50	

FITTED SHIRT SIZING CHART			
Shirt Size	Neck	Max. Chest	Max. Mid-Section*
Boys' Large	13" - 13.5"	32	29
Small	14" - 14.5"	36	33
Medium	15" - 15.5"	40	37
Large	16" - 16.5"	43	41
X-Large	17" - 17.5"	46	45
2X-Large	18" - 18.5"	50	48
3X-Large	19" - 19.5"	55	52

***Note:** The Max Mid-Section measurement can be achieved by measuring around the largest part of the gentleman's stomach.

REVERSIBLE BELT SIZING	
Size	Waist
X-Small	21 - 24
Small	25 - 28
Medium	29 - 32
Large	33 - 36
X-Large	37 - 40
2X-Large	41 - 44
3X-Large	45 - 48

NOVELTY SUSPENDER SIZING CHART	
Coat Size	Suspender Size
2B - 7B	Boys' (B)
8B - 46X	Men's (M)
47L - 60X	Long (L)

REGULAR FIT SHIRT SIZING CHART			
Shirt Size	Neck	Max. Chest	Max. Mid-Section*
Small	14" - 14.5"	39	36
Medium	15" - 15.5"	42	40
Large	16" - 16.5"	45	44
X-Large	17" - 17.5"	49	48
2X-Large	18" - 18.5"	53	51
3X-Large	19" - 19.5"	57	55
4X-Large	20" - 21.5"	61	59
5X-Large	22" - 23.5"	65	63
6X-Large*	24" - 25.5"	69	67
7X-Large*	26" - 27.5"	73	71

Note: When fitting larger size shirts, you must pay close attention to the body size in relation to the neck. Heavy-set people may have a small neck size in proportion to their body. A man that has a 62" chest may have an 18.5" neck, but that shirt would not cover the width of his body.

***Note:** The Max Mid-Section measurement can be achieved by measuring around the largest part of the gentleman's stomach.

Coat Size Range	BOYS' BACKLESS VEST			MEN'S FULLBACK VEST													MEN'S BACKLESS VEST	
	Small	Medium	Large	Regular Sizes						Long Sizes - 6' 2" and over								Fit All
				X-Small	Small	Medium	Large	X-Large	2X-Large	3X-Large	Small	Medium	Large	X-Large	2X-Large	3X-Large		
3 - 6	BS	BM	BL	18B - 35	36 - 38	39 - 42	43 - 45	46 - 48	50 - 54	56 - 58	36-38	39 - 42	43 - 45	46 - 48	50 - 54	56 - 58	60 - 70	
Vest Size Code	BS	BM	BL	RXS	RS	RM	RL	RX	R2	R3	LS	LM	LL	LX	L2	L3	5XA	



FOR RENTAL